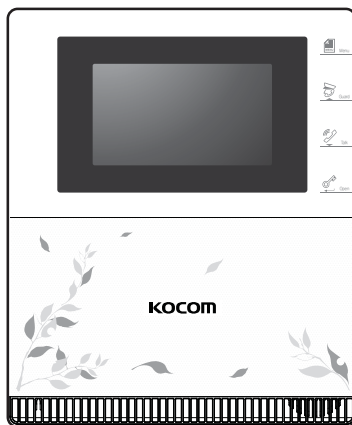


K6B VP-43H User's manual

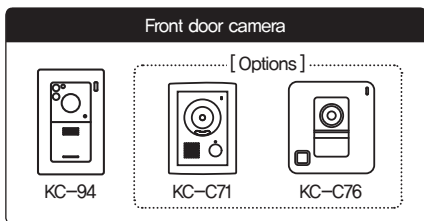
[10.922cm(4.3") Digital color LCD video phone]

Unmanned guard system (main device) Color hands-free video phone

- Compact slim design
- 4.3-inch Digital Color LCD Monitor
- Visitor talk and open function
- Interactive talk function between guard room and lobby phone
- Front door camera monitoring function
- Lobby phone monitoring function
- Interlock function without hub (multi-house mode)
- Security (sensor) interlocking operation according to Out setting
- Display of operating status OSD and icon
- Interworking system with UTP 8 lines
- Self-diagnosis function of K6B Main wiring connection
(Can be run on K6B lobby phone)
- Courier notification and car entry notification function as an option when interlocked with hub



K6B VP-43H



Thank you very much for purchasing our product. Please read it carefully before use and be sure to keep it. Thank you.



Table of contents

Safety precautions	3 ~ 4
Product configuration	5
Product specifications	5
Installation Location	6
Description and function of each part	7
Icon display type	8 ~ 9
How to use	10 ~ 11
Security behavior	12
User settings	13
Installer settings	13
Precautions	14
Product wiring diagram	15
Wiring diagram	16 ~ 17

Cautions for safety

For safe use, please stick to the following cautions.

- Please, save this manual after reading these instructions carefully.
- Read and understand all instructions to set up rightly.
- This Cautions for Safety may include items that are not contained in specifications of the product that consumer purchases.
- If you need assistance with the set-up or operation, please contact with A/S center.

The important marks in the manual.

To help our customers to understand this manual, to prevent any personal injury or property damage, some marks are used in the manual. The marks and the drawing signs are below. Please, understand the marks before reading the manual.

The meaning of the drawing signs.



Sign to show what not to do.



Mishandling the device with ignoring this sign may result in serious injury or death.



Mishandling the device with ignoring this sign may result physical injury or material damage.



Sign to tell you that you should follow the instructions.



Sign to tell you that you need more attention including (high voltages, electric shock, danger, warning)



Sign to tell you that you can't disassemble this unit.



Sign to tell you that you must unplug the unit.



Caution

▶ Cautions for set-up

- The law limits distributing the power lines to an authorized person from government.
- The work from an unauthorized person cause fire or electric shock.
- Place this unit securely on a stable surface, Serious damage and/or injury may result if the unit falls.
- Do not set up this unit near the leaking place because it may expose you to dangerous voltages or other risks.
- Even if your product is water proof, do not install it slanted place of water leakage, which can a short circuit.
- Fix the product on the wall safely according to the installation guideline to prevent any damage or injury.



- The work of distributing wires needs skills and experiences. So please, for assistance, contact your dealer or call service center.
- The communication lines should be built in being distant from the power source.
- This may result in the risk of fire, electric shock and communication disorder.
- Setting the communication lines in a high humid place such as outside without any protection from rain causes the communication disorder.
- Keep the hook at the wall-mounted device safe. The hook may cause the physical injury.
- Think about the thickness and quality of wall material. The unqualified material may make the device fall.



- Set the device of the wall-mounted type not to fall. Falling from an earthquake causes personal injury.

▶ Cautions for Repairs and Maintenance

- Keep the inside of the device clean. Having the dust inside without any cleaning for a long time causes the fire.
- If necessary, contact your dealer or service center to get cleaning service.
- Unplug this device when you want to check the inside. If there is no plug, please, turn off the circuit breaker.
- Unplug this device when you try to move it to another place.
- If the electric line is connected inside of the unit, please contact your dealer or service center.



- Do not use liquid or aerosol cleaners. Use a damp cloth for cleaning.



Warning

▶ Warnings for Usage

- Do not install this unit near the water and dust, for example, in a bathroom or near the washing machine. It caused fire and electric shock.
- Do not install this unit near the fire, for example, near kitchen sink, heater or the like.
- Do not install near the noxious gas such as Hydrogen Sulfide, metal power and the like.
- Do not install near the water and chemicals.
- Do not give any damage, break and modify the plug. Overloading, heating, pulling causes the damage.
- Do not place the plug near the heater. The damaged code causes fire and electric shock. Do not pull the power code when unplugging.
- The damaged code causes fire and electric shock. Must pull with plug. Do not touch with wet hands. It causes the electric shock.
- Do not use any other voltage, except the marked regular voltage.
- Do not use the power terminal at the units to other electric device except the designed device.
- Do not install the units at the leaking place if it doesn't have any waterproof mark. Do not install the unit when the power is on.
- Install the circuit breaker after checking the safety such as electric shock and leakage. Turn off the power before you install or A/S



- Check the suitability of the lines for installing when you use the exiting lines.
- Do the wiring work by using the designed material.
- Connect the electric wire with the designed ways and ground.
- Do not connect with any other devices except the designed devices to compose the system.



- Unplug electric wire and communication lines from the units before moving to another place.

► Cautions for Use

- This unit is not designed for security purpose.
- Do not place a pot with water or a small metal material on the Units.
- Do not cover the ventilating opening or put any metal material in the units.
- During thunderstorms, avoid using this unit. There may be a remote risk of an electric shock from lightning.
- Do not modify the unit.
- Open the main gate after checking ID if the image and sound system do not work. Call A/S



► Cautions for Abnormality

- Change the damaged electric code.
- Unplug this unit from plug socket and refer servicing to an authorized service center when the following conditions occur:
 - If liquid has been spilled into the unit.
 - If the unit does not work normally by following the operating instructions.
 - If the unit exhibits a distinct change in performance.
 - If the unit has been dropped or physically damaged.



Caution

► Safety Instructions, Warnings and Cautions of Each System

- Do not disassemble this unit at will as this device is composed by precision parts.
- Install the unit by following the set-up instructions of Kocom.
- Do not touch or insert any foreign substances, for example, sticker, magnetic, opener and the like.
- Make U-type at the end of wires as the rain can effect on the system by following the wires during the rainy season.

► Videophone

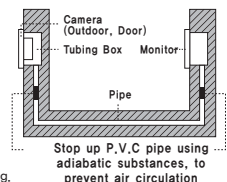
- Separate the AC/DC lines with the hook of the wall-mounted type when installing.
- Connect the lines after peeling the wires properly.
- Do not distribute signal line with AC line.
- Use the designed driver to connect the lines to terminal.
- Do not clean the LCD with the damp cloth for cleaning. Use the only dry and soft cloth.
- Do not install the main gate monitor at the leaking place.

► Things You Need to Know

- This product is designed as a home videophone and cannot use continuously like monitor camera.
- If there is temperature difference between inner part of camera and surrounding, dew condensation occurs on camera lens and may disturb image.
- If dew condensation is removed from camera lens, image quality recovers.
- White LED light examination range is narrower than camera shot range at night, so there is less amount of light at night than day.
- So it is difficult to see the face in low illumination condition due to noise increase on screen, but it is not from defect.
- Monitor screen (liquid crystal panel) is not in defect when some pixels always light or black out.
- Please install monitor and camera over 5cm away.
- Also, avoid installing at a place with too much noise, because too much noise around camera causes phone call inferiority.
- Do not place an object within 20cm in front of monitor. It causes phone call inferiority, especially because microphone is installed at the top of monitor.
- If strong light such as sunlight flows into camera module, screen saturation (or strange mark) and image shaking might occur.
- This is not a defect, so please do not install camera where a direct ray of light do not flow if possible.

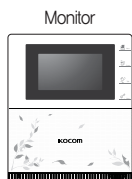
► Cautions


- In some cases there is occurrence of product destruction, malfunction, noise mixing and picture quality deterioration due to mixing of other tool's induced, voltage or thunder with communication wiring of monitor/camera, monitor/extended monitor.
- Do not wire with power line such as outdoor wiring or AC power, or phones and other tools.
- You cannot use it if you incorrectly wire the AC voltage between monitor/camera, monitor/extended monitor.
- Call the store or agency where you purchased this product and consult to solve the problem.
- Beware that unfixable damage might be caused due to authorizing AC voltage on communication wiring of monitor/camera, monitor/extended monitor.
- Do not ever disjoint this product. It may cause electrocution accident when touching high-voltage circuit inside this product.
- Outside power authorizing this product must be confirmed of product description and use rated voltage.
- Beware that if higher voltage is authorized, unfixable damage might be caused due to product destruction.
- Power must be connected to domestic voltage (product rated voltage) consent or interior wiring.
- If connected to other motive power or inverter-type power, product destruction, noise mixing, and picture distortion may occur.
- Do not drop this product. Glass is used for monitor and might break, or cause other circuit inferiority.
- In such case, immediately turn down the power switch, and call to consult agency or store in which this product was purchased.
- Keep away from any conditions where water splatters or falls. Do not place anything containing water like a vase on the product.
- If installed near transmission antenna such as broadcasting station, electric wave may mix and cause picture distortion or voice mixing.
- Avoid installing near tools with strong electromagnetic waves such as microwaves and cell phones, or it may cause picture distortion.
- Do not install monitor in following places.
 - ① Above or around water heater, rice-cooker, heater
 - ② Place exposed to direct rays of the sun
 - ③ Place with temperature below 0°C such as cold store
 - ④ Place with high humidity such as bathroom, washroom, heated room
 - ⑤ Place with a lot of gas, dust, smoke
 - ⑥ Dangerous place with sprays of water or chemicals
- Do not wipe with insecticide, drugs or chemicals such as thinner and alcohol, or it may damage the surface of this product.
- Beware of occurrence of image quality deterioration or malfunction from cause of humidity due to penetration of chemicals or water into camera's urea resins.
- As in the picture, it prevents temperature difference of camera (outside) and monitor (inside), and removes dew condensation caused by humidity of camera window.
- Camera must be installed when wall cement is completely dry.
- When product is installed in winter below -5°C, wait for approximately 2 hours to connect. Dew formation in monitor and camera due to temperature difference inside and outside may cause product defect.
- Avoid installing monitor and camera in place directly exposed to heat or where gas noxiousness is highly occurring.





Product configuration

■ Monitor components



-  4×25mm(4ea)
 · A Wall hanger frame screw


- 
 · Connector wiring for power (AC 220V) connection


- 
 · Wiring for 4P front door camera connection (1ea)


- 
 · 5P Lobby Video Input & Output

Wall mount bracket



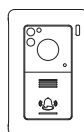
-  3×8mm(1ea)
 · A Wall mount bracket monitor screw

- 
 · Wiring for 8P system line connection (1ea)

- 
 · Wiring for 4P sensor connection (1ea)
 · Wiring for 4P door lock connection (1ea)

■ Camera components

[KC-94]



· Camera Survivor (optional)



-  3×10mm(1ea)
 4×25mm(4ea)
 · Screws for fixing main body on the wall

Product specifications

■ Monitor

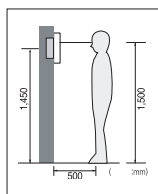
Model name	K6B VP-43H
Power supply	AC100V ~ 240V, 50Hz/60Hz
Power Consumption	1.2W(When stand-by), 7W(When operating)
Operating temperature	0℃ ~ +40℃
Mount method	Hands-free
LCD	4.3인치 디지털 LCD
Input / Output Specifications	System line: 8 lines (polarity) Lobby video: 2 lines (polarity) (UTP or coaxial) Front door camera: 4 lines (polarity)
Method of installation	Exposed wall hanging type
Size	180(W) x 215(H) x 27(D)mm

■ Front door camera

모델명	KC-94
Power supply	DC 12V±1V(Sourced From Monitor)
Power Consumption	2.5W
Operating temperature	-10℃ ~ +50℃
Size	89(W) x 131(H) x 13(D)mm
Lens angle	Diagonal 100° (angle adjustable)

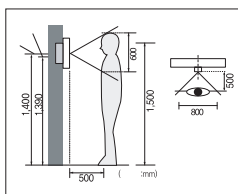
※When using K6B Main wiring UTP connection, up to 150M, 60 houses can use it and the use of coaxial cable is recommend for more than that.

Installation location



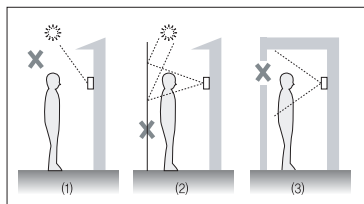
■ Monitor installation location

- The standard of installation height of the monitor is about 1,500mm at which the center of the screen is at eye level. In this case, the center of the wall hanging iron (the center of the pipe box) is about 1,450 mm from the bottom.
- Standard installation height



■ Camera installation location

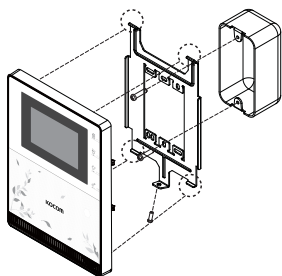
- The standard of camera installation height is about 1,400mm from the lens part to the ground. In this case, the center of the camera dummy (Piping Box) is about 1,390 mm from the bottom.
- Standard installation height



■ Precautions for camera installation

- Please install the camera in a place without direct sunlight.
- Be careful because the visitor's face is dark and difficult to identify in backlight.
- Do not install the camera in the place as shown on the left
 - (1) A place where the sky is reflected in the background
 - (2) A place with white walls where direct sunlight is reflected from the front
 - (3) A place sealed with no light

■ How to install the monitor

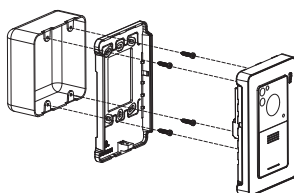


■ When the power cord is cut and connected directly to the power line

- 1) Electrical work should not be done by yourself. When installing the product, you must request the installation to a person who has an electric construction license or an electrical installer.
- 2) Be sure to insulate the power cord with insulation tape so that the wire metal part is not exposed while connecting to the power line. [Exposed wires may cause fire or electric shock due to contact between the wires, so you must be careful.]
- 3) If doing electrical work, you must shut down the power supply and connect the product.

- 1) Remove the wall mount bracket on the back of the monitor.
- 2) Install the wall mount bracket in 1 hole box or wall with attached screws.
- 3) Refer to the product wiring diagram on the rear terminal of the monitor for wiring.
- 4) Hang the monitor on the wall mount bracket and secure the monitor to the wall mount bracket using the attached screws.
- 5) Put the power plug of the monitor in the outlet and check that the power switch on the left side of the monitor is [ON].

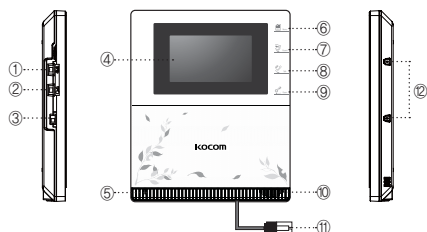
■ How to install the camera



- 1) Install the wall mount bracket in 1 hole box or wall with screws.
- 2) Refer to the product wiring diagram on the rear terminal of the front door camera for wiring.
- 3) Hang the front door camera on the wall mount bracket and secure it to the wall mount bracket using the screws.

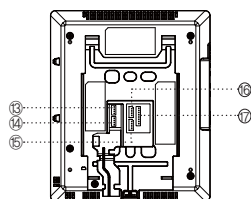
Description and function of each part

■ Front of monitor



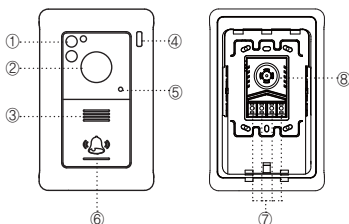
- ① Call volume control switch : Controls call tone to 3 levels.
- ② Voice volume control switch :
Controls the size of the visitor' s voice output to the speaker of the monitor in three stages.
- ③ Power switch : Turns on / off the power entered in the product.
- ④ Monitor Screen (LCD) : Displays the visitor' s video and status OSD.
- ⑤ Microphone : Voice is entered.
- ⑥ Menu button : Used to change settings.
- ⑦ Guard (▲) button : Used to call the guard phone or for calls.
Also used as UP KEY after menu entry.
- ⑧ Monitoring / talk (▼) button:
Used when monitoring the front door, when talking or ending talk. Also used as DOWN KEY after menu entry.

■ Rear of monitor



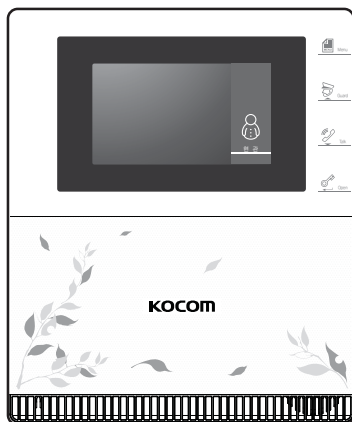
- ⑨ Open (🔑) button :
Used to open the door of a place where the lobby phone and door switch are connected
- ⑩ Speaker : You can hear call tone, button tone, and talk sound.
- ⑪ Power cord : Is AC power input cord jack.
- ⑫ Power LED : Turns on when the product is powered on.
- ⑬ Door switch connection terminal : CONNECTS THE DOOR SWITCH FOR DC.
- ⑭ Sensor connection terminal : Connects security sensor and external emergency input.
- ⑮ Lobby video input & output connection terminal :
Connects the input & output wiring of the lobby video.
- ⑯ Front door camera connection terminal : Connects the front door camera.
- ⑰ K6B Main wiring connection terminal :
Connect the K6B SYSTEM main wiring. (DATA/communication circuit 2)

■ Front door camera(KC-94)



- ① White LED diffusion :
A white LED that operates at night is built in, When the area around the camera is dark, the LED lights up.
- ② Camera Lens : Transmits images around the camera to the monitor.
- ③ Speaker : You can hear the monitor' s tone.
- ④ Microphone : Voice input.
- ⑤ Power LED : When the visitor presses the calling button on the camera, the LED lights up.
- ⑥ Call button : When you press this button, call tone will ring from the monitor.
- ⑦ Monitor terminal : This is a terminal to connect the monitor and camera with [4-line polarity].
- ⑧ Adjust the camera angle: Adjust the camera angle according to the Installation Location.

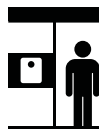
Icon display type



- Display of icons during call reception event occurrence and call transmission operation



Front door



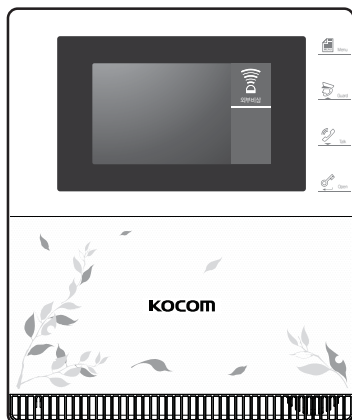
lobby



Guard



Open



- Display of icons when security event occurs



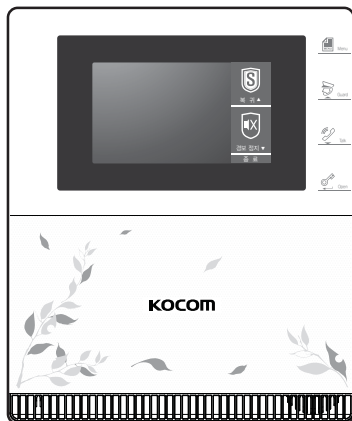
External emergency



Security 1



Security 2



- Display of icons when the menu button is pressed in the event of a security event



Return

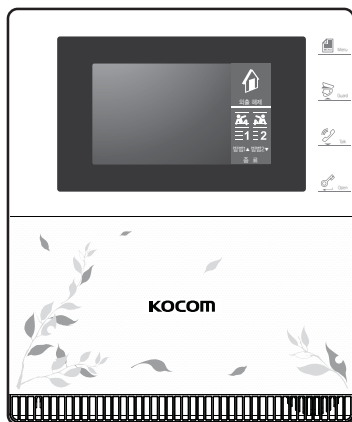


start alarm



stop alarm

Icon display type



- Press the menu button when waiting to display the Out setting icon



Out setting



Out release



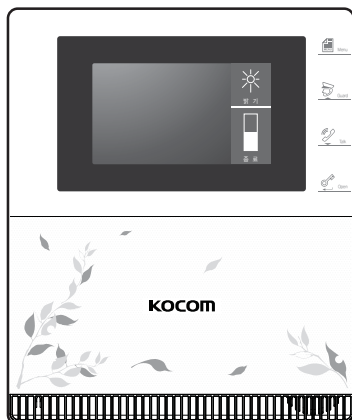
Setting 1 ▲ Security 1 ▲



Setting 2 ▲ Security 2 ▲

Setting1 setting/ release

Setting2 setting/ release



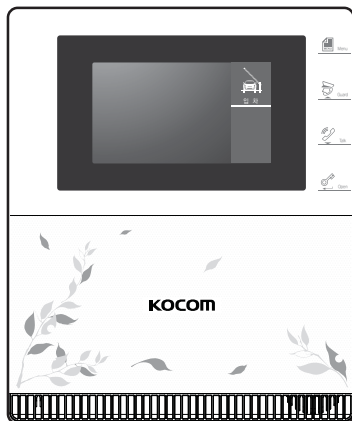
- Display of icons in screen brightness control



Brightness



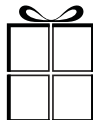
Brightness stag



- A main device option displays parking system and courier system interlocking icon



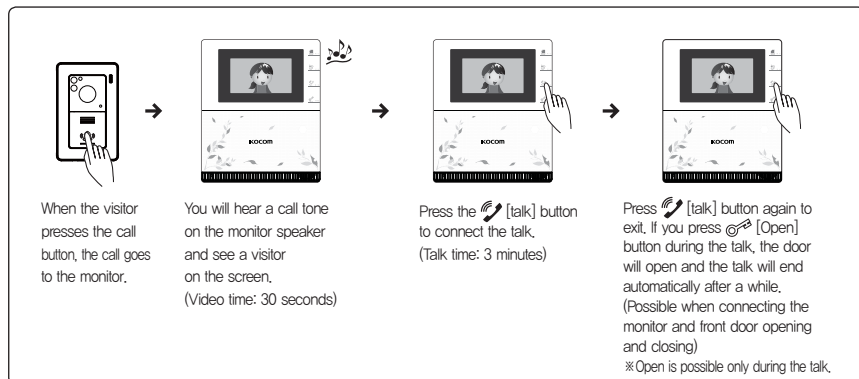
CARIN(Parking)



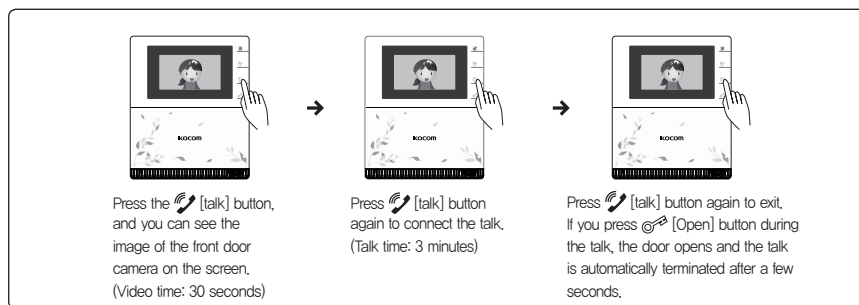
DELIV(Delivery)

How to use

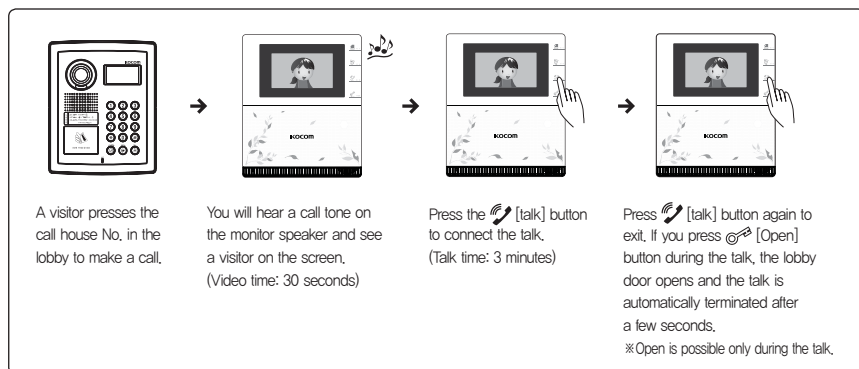
■ When a visitor makes a call from a front door camera



■ If you want to see the front door image on the monitor

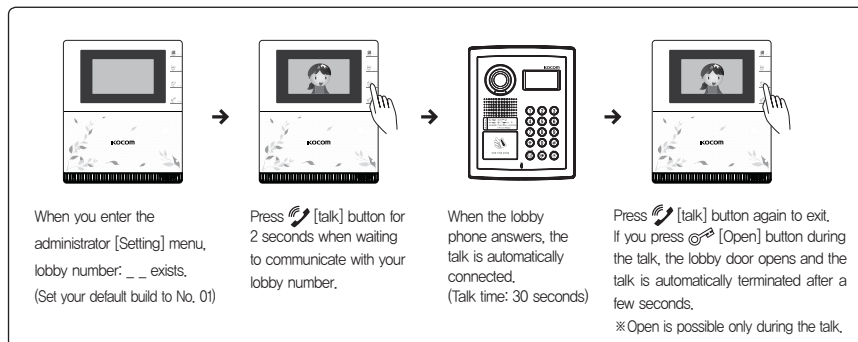


■ When a visitor makes a call from the lobby



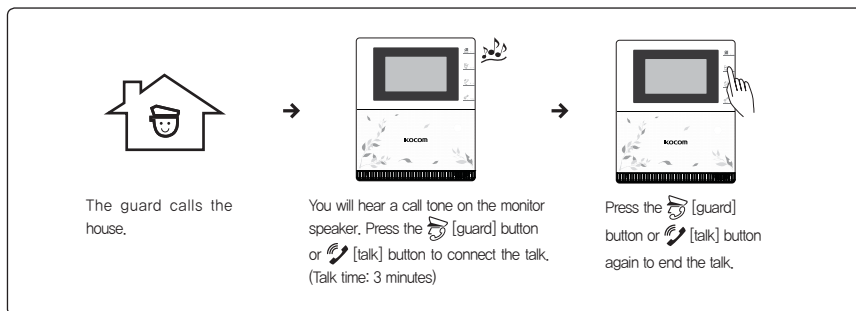
How to use

■ If you want to talk while seeing the lobby on the monitor

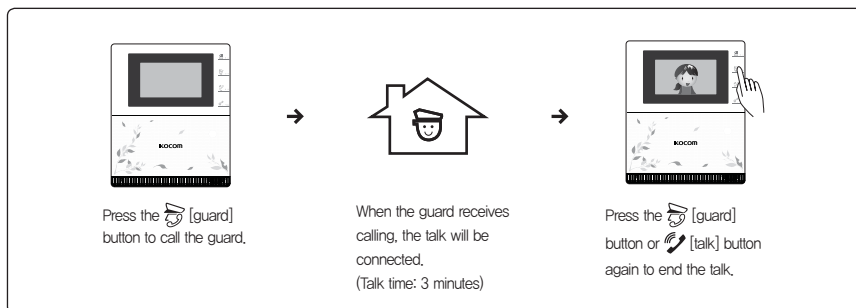


※ If you press the Out button for 2 seconds within 1 minute after turning on the power, it enters the administrator [Setting] menu.

■ When calling from the guard



■ When calling from the house to the guard



※ When setting Hub mode on the menu setting screen: Basically, it is only possible to connect with the guard specified in the hub or guard phone. Press and hold the guard button for 2 seconds to call the integrated guard room installed and set.

※ When setting multi-house mode on the menu setting screen: Basically, you can call only to one guard room.

Security behavior

1. Security setting function

- 1) If you press the menu button when waiting, you can see the out, security 1, and security 2 icons as shown in the picture. Press the door open button at exit and you will return to the standby screen.
- 2) Security 1 setting operation
 - Security 1 can be disabled by pressing the guard button.
 - If it is not possible to set due to the security 1 check mark, set the sensor as a standby condition with the condition that the sensor is being detected on the security 1 connection terminal.
 - If the sensor is detected on the security 1 connection terminal normally when the security 1 is set, the alarm sounds on the product, the corresponding build and room are displayed on the guard phone, and an alarm sound is also generated in the guard phone.
 - The sensor also operates Normal Close. (Example: magnetic sensor)
- 3) Security 2 setting operation
 - Security 2 can be disabled by pressing the talk button.
 - If it is not possible to set due to the security 2 check mark, set the sensor as a standby condition with the condition that the sensor is being detected on the security 2 connection terminal.
 - If the sensor is detected on the security 2 connection terminal normally when the security 2 is set, the alarm sounds on the product, the corresponding build and room are displayed on the guard phone, and an alarm sound is also generated in the guard phone.
 - The sensor also operates Normal Close. (Example: magnetic sensor)
 - Security 2 can be changed to external emergency input on the menu screen.

4) How to cancel security 1,2

- When a security alarm occurs, press the menu button for 2 seconds to release all.
- When a security alarm occurs, press the menu button and the OSD and icon will be displayed on the right screen.
To activate the [Return] icon at this time, press the guard button to clear the alarm.
- When a security alarm occurs, press the menu button and the OSD and icon will be displayed on the right screen.
To activate the [Stop alarm] icon, press the call button to stop the alarm only.

2. External emergency function

(Option: Change the menu screen setting '6 External emergency operation' for use.)

- 1) After entering menu screen setting, select with Normal Close / Open according to sensor type in '6 External emergency operation'. If you select the above, security 2 icon and function will be deleted automatically
- 2) If the sensor is detected at the security 2 sensor port during external emergency setting, the emergency icon [external emergency] will be displayed and the alarm will sound at the product and the corresponding build, room will be displayed on the guard phone, and an alarm will sound.
- 3) How to clear external emergency
 - Press the guard button during an external emergency event and press the security button to activate the [Return] icon on the screen as shown in the picture to clear the external emergency situation.
 - Pressing and holding the menu button for 2 seconds during an external emergency event will clear the external emergency situation.

3. Out setting function

- 1) If you press the menu button when waiting, you can see the out, security 1, and security 2 icons as shown in the picture. Press the door open button at exit and you will return to the standby screen.
- 2) Press the menu button to select [out setting] or [out release].
- 3) Operation when setting out
 - When outgoing is set, the call is made to the guard room about 10 seconds after the call is made from the lobby phone to the corresponding house
 - When outgoing is set, the outgoing status will be displayed in the guard phone when the call is made from the guard phone to the corresponding house.
 - If the security is not set, the alarm will not sound even if a security sensor is detected.
- 4) When you use the product at home (e.g., press the button), the outgoing setting will be automatically cleared



User settings

1. How to adjust the LCD screen brightness

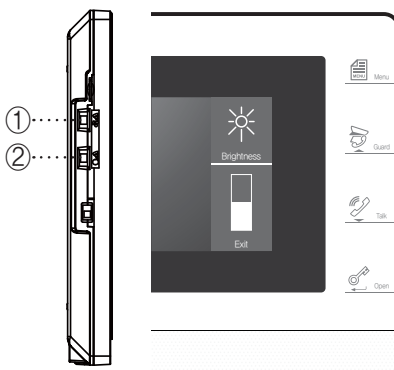
- Press the menu button in the call and talk state to select the [Brightness] icon and press the open button at [Exit].
- The guard button works with increase and the talk button with decrease.

2. How to adjust the volume of call tone

- Move the switch ① on the left side of the product to adjust the call volume in three steps.

3. How to adjust the volume

- Move the switch ② on the left side of the product to adjust the volume (speaker) in three steps.



Installer Settings

- If you turn on the power switch on the left side of the product and press and hold the menu button for 2 seconds within 1 minute, the Installer Settings screen will appear as below.

[Setting]	
1 House No.	: Build 0101 Room 0101
2 Password	: FFFF
3 Lobby number	: 01
4 Mode	: Multi-house
5 MIC, SP sensitivity	: Setting
6 Front door opening time	: 1 second
7 External emergency operation	: Operation with security 2 sensor
8 Reset	: No

〈KEY button usage on setting screen〉

- Menu button : Move, Exit the upper menu
- Guard Button : Up, Increase
- Talk button : Down, Decrease
- Open Button : Enter, Exit, Execute

1. House No. : Change the corresponding house No.

- If Hub is connected, refer to Hub installation manual for batch registration of house number.
- Change the house No. in the guard room after connecting the house with the guard by the house No. individual registration method in hub.

2. Password : The resident can register the house password he/she wants and open the door with the corresponding house open password in the lobby phone.

3. Lobby No. : You can make a monitoring call with your build lobby number.

4. Mode : The default is Multi-house.

- Multi-house: Consists only with guard, lobby, and house phone without hub.
- Hub: Hub exists.

5. MIC, SP sensitivity : You can change each individual call sensitivity value when entering MIN, SP sensitivity.

6. Front door opening time : The default is 1 second.

- 0.1~ : The door open time is maintained as long as the open button is pressed.
- 1 second, 2 seconds, ... : 9 seconds: If you press the open button, the door open time will be maintained as long as the time.

7. External emergency operation : The default is the security 2 sensor.

- Operation with security 2 sensor: External emergency does not work and works with security 2 sensor.
- Normal Open: Security 2 sensor operates as external emergency, and when security 2 sensor signal line is connected, external emergency will work.
- Normal Close: Security 2 sensor operates as external emergency, and when security 2 sensor signal line is disconnected, external emergency will work.





8. Reset : Is default No.

- Yes : Press the open button to reset all settings. It requires special attention.

Precautions

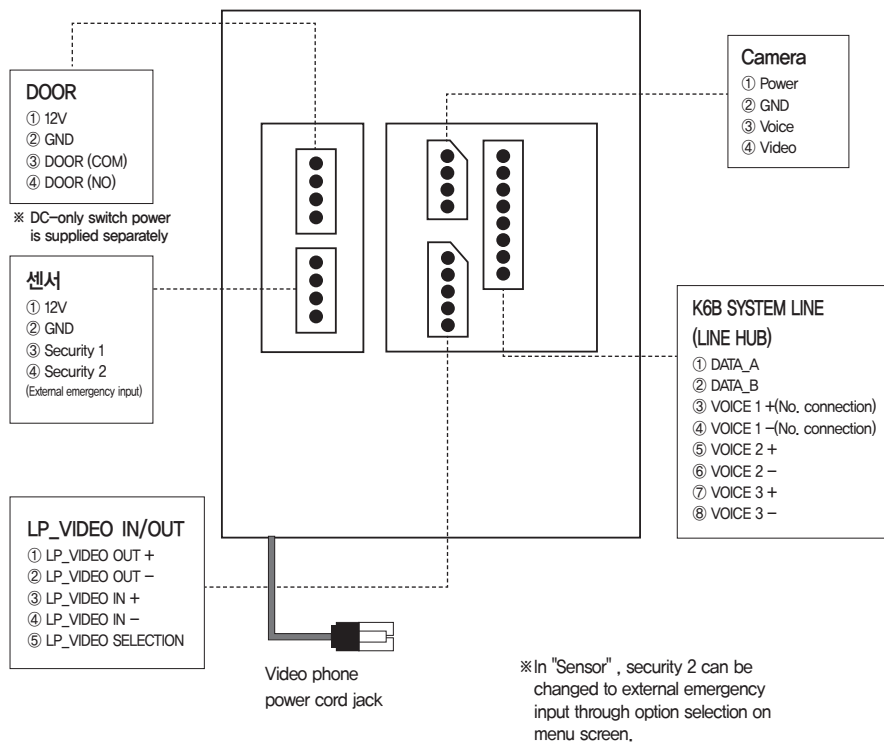
- If you set [4 mode] incorrectly in the Installer Settings, you cannot call the guard or lobby.
- When installing hub, be sure to register the house number in hub in batch or individually.
- In case of external emergency sensor, emergency sensor can be classified into N.O (Normal Open) and N.C (Normal Close) as shown in the picture.

Be sure to install external emergency sensor and then (N.O or N.C) according to sensor type Change the setting in '6 External emergency operation' in menu setting. If the external sensor setting method is different with no external emergency sensor installed, the product will beep continuously.

Sensor operation method	When waiting	When detecting sensor
N.O Normal Open		
N.C Normal Close		

Product wiring diagram

※Be sure to turn on the power of each monitor after completion of wiring as below and check normal operation.



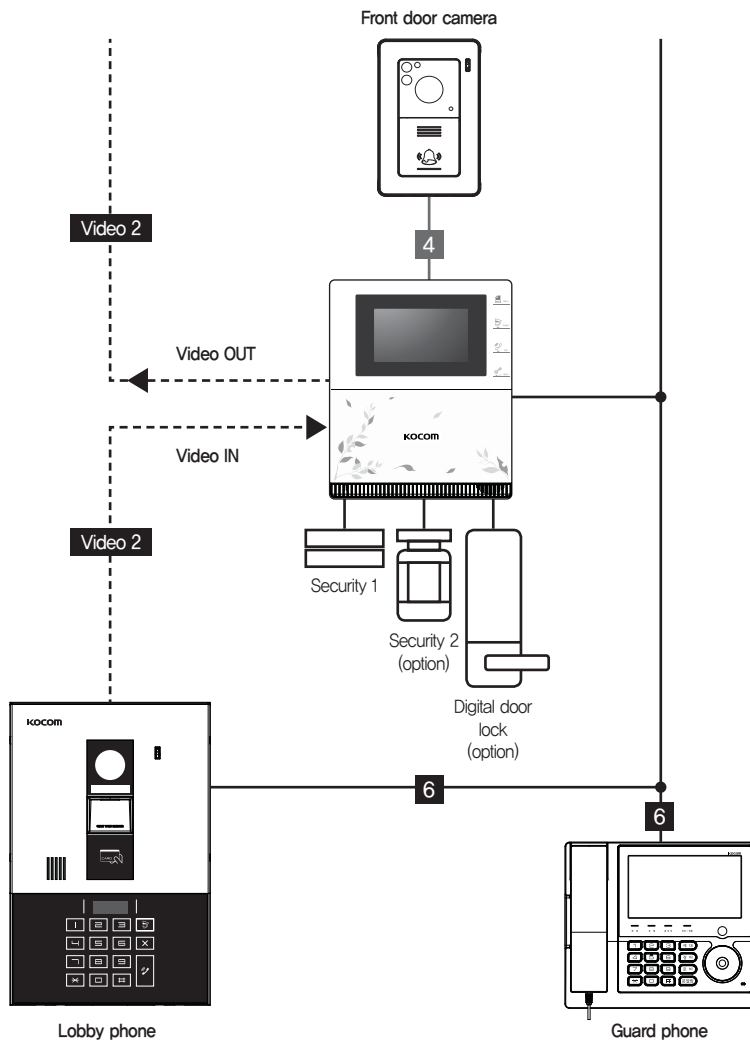
■ K6B main wiring UTP cable connection specification

UTP color	Connector pin specification
Orange band	Communication A
Orange	Communication B
Green band	Lobby video input +
Green	Lobby video input -
Blue band	Talk 2 +
Blue	Talk 2 -
Brown band	Talk 3 +
Brown	Talk 3 -

※Be sure to connect the same color as above. When connected differently from above, video noise and audio noise may occur.

Wiring diagram

■ K6B Multi-house Wiring diagram



Wiring specification

— **6** — Communication/ VOICE / (6 lines) Polarity UTP 3P x 1

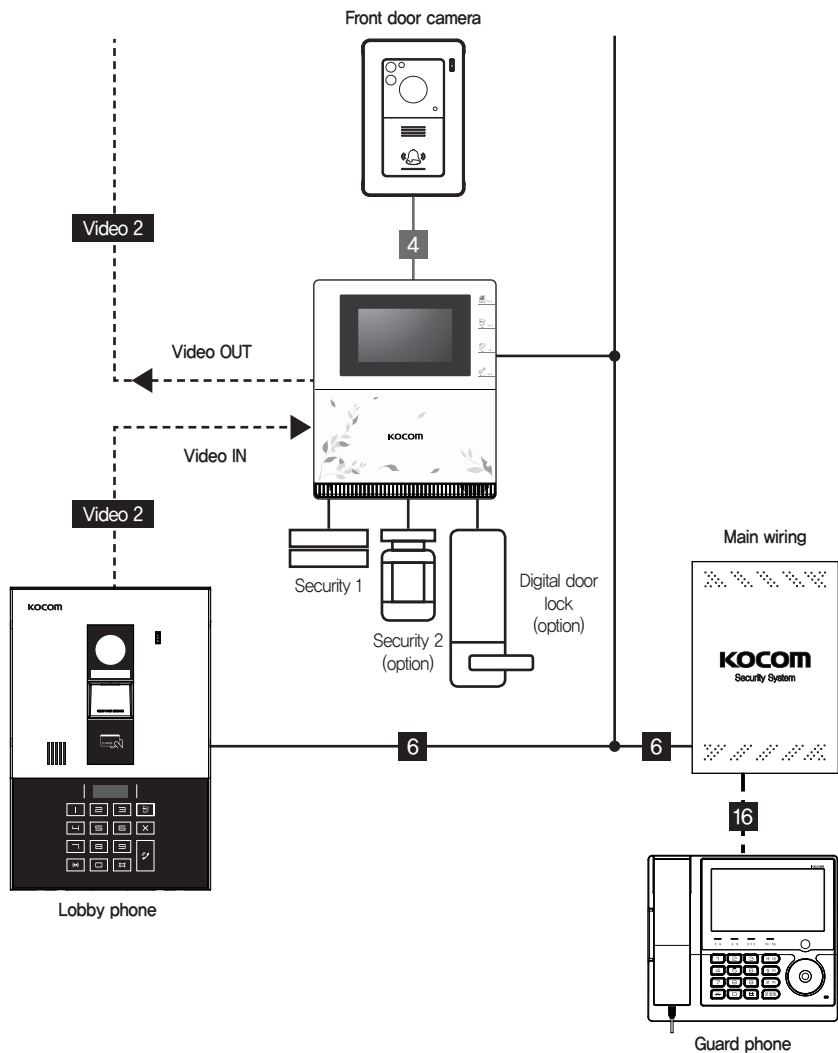
• **Video 2** • Lobby phone video: UTP 1P x 1 or coaxial cable

※Use lobby video input & output when using a separate video distribution amplifier.

※When using UTP with lobby phone video wiring, the video quality may deteriorate due to the product configuration and wiring.

Wiring diagram

■ K6B hub Wiring diagram



Wiring specification

- **6** — Communication/ VOICE / (6 lines) Polarity UTP 3P x 1
- **Video 2** • Lobby phone video: UTP 1P x 1 or coaxial cable
- **16** • Guard Master Communication / Call – CPEV
0,65 x 10P or (16 lines) polarity UTP 4P x 2 or more

※ Use lobby video input & output when using a separate video distribution amplifier.

※ When using UTP with lobby phone video wiring, the video quality may deteriorate due to the product configuration and wiring.

Warranty

▶ To receive after service, have the following ready before you contact our branches.

1. Name of the product.
2. Model number of the product.
3. The area of problem.
4. Phone number and address at which you can be contacted.

Warranty Card

PRODUCT	
MODEL	
DATE PURCHASED	
WARRANTY PERIOD	
AGENCY ADDRESS	

▶ KOCOM Warranties the original purchaser of this product as follows.

- 1) This product is produced under strict quality control and inspection procedures.
- 2) If this product breaks down during proper use as a result of product defect, KOCOM will repair it within one year from date of purchase free of charge.
- 3) The following cases will be subject to charge, even during warranty period:
 - a. Breakdown during transport, or through careless treatment, by consumer.
 - b. Breakdown cause by unauthorized repair, or system modification.
 - c. Breakdown caused by natural disaster or power disorder.